



Ladymead Close

West Hunsbury, Northampton

oriordanbond
SALES & LETTINGS



Ladymead Close

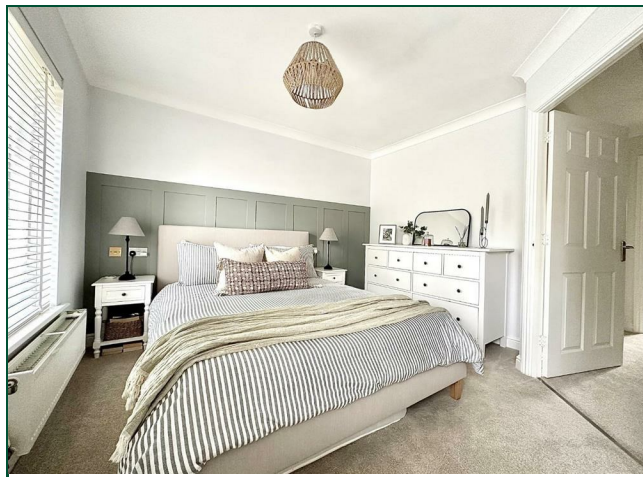
West Hunsbury
NN4 9SE

Price
£319,995

An outstanding, three double bedroom home, nestled in a cul-de-sac within the desirable area of West Hunsbury boasting accommodation approaching 1,000 square feet over two floors.

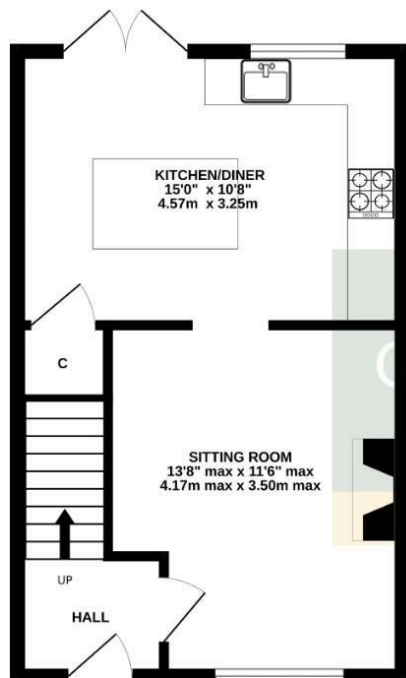
The accommodation comprises; entrance hall, sitting room, fabulous kitchen diner with integrated appliances and a central island. To the first floor are three double bedrooms, a refitted family bathroom and a refitted en-suite shower room. Outside there is a block paved driveway for three cars and a carport, while the rear garden is easterly facing with paved seating areas, a manicured lawn and timber fencing to enclose. (A/896/L)

- Immaculately Presented
- Three Double Bedrooms
- Refitted Kitchen Diner
- Refitted Bathroom and En-Suite
- Generous Plot
- Carport and Driveway

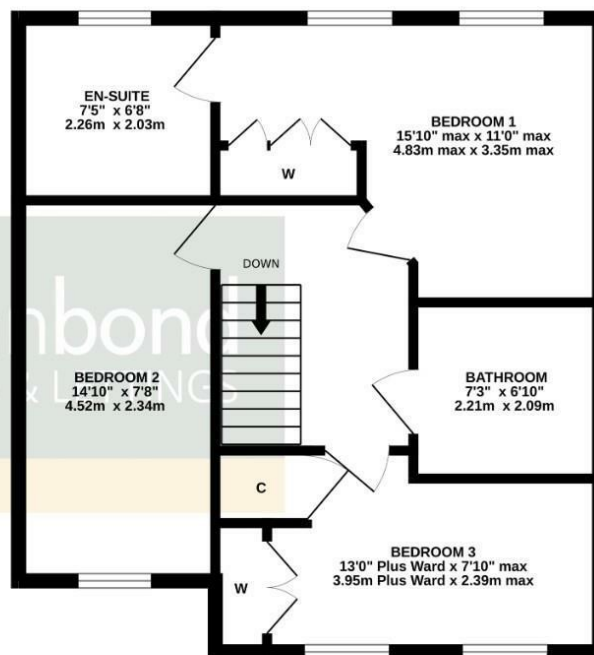




GROUND FLOOR
358 sq.ft. (33.3 sq.m.) approx.



1ST FLOOR
538 sq.ft. (50.0 sq.m.) approx.



TOTAL FLOOR AREA: 896 sq.ft. (83.3 sq.m.) approx.

Whilst every attempt has been made to ensure the accuracy of the floorplan contained here, measurements of doors, windows, rooms and any other items are approximate and no responsibility is taken for any error, omission or mis-statement. This plan is for illustrative purposes only and should be used as such by any prospective purchaser. The services, systems and appliances shown have not been tested and no guarantee as to their operability or efficiency can be given.
Made with Metropix ©2025



Additional information

- Council Tax Band: C
- Energy Efficiency Rating: C

Viewing

Viewing strictly by appointment – details below

Disclaimer

O'Riordan Bond Estate Agents Limited has not tested apparatus, equipment, fittings or services and so cannot verify they are in working order. The buyer is advised to obtain verification from their solicitor or surveyor.

O'Riordan Bond Hunsbury Sales

01604 706007

hunsbury@oriordanbond.co.uk

